

2018 ASCE SOUTHEAST

MAILER 2

STUDENT CONFERENCE





MAILER 2

REGISTRATION INFORMATION AND DEADLINES
HOTEL INFORMATION
SPIRIT COMPETITIONS
COMPETITION UPDATES
VOLUNTEER INFORMATION
IMPORTANT DATES

PLEASE CONFIRM THAT YOUR SCHOOL HAS RECEIVED MAILER 2 BY FILLING OUT THE FOLLOWING FORM BY **DECEMBER 15, 2017**

[HTTPS://GOO.GL/FORMS/FSHWRKWX8MYOTQNG2](https://goo.gl/forms/FSHWRKWX8MYOTQNG2)

THIS FORM SUBMISSION DOES NOT REGISTER YOUR SCHOOL FOR THE COMPETITION. YOU MUST PAY AND REGISTER ONLINE TO ATTEND THE 2018 CONFERENCE

WE HOPE YOU ALL ARE GETTING EXCITED FOR THE 2018 SE ASCE CONFERENCE AND WE LOOK FORWARD TO WELCOMING YOU ALL TO GAINESVILLE IN MARCH!

REGARDS,

MARY SULLIVAN, BECCA KIRIAZES, AND RYAN CASBURN
UF STUDENT CONFERENCE DIRECTORS
INFO@SE-ASCE2018.COM



REGISTRATION DEADLINES

EVENT	DATE
Mailer 2 Confirmation Receipt	December 15, 2017
School Registration (\$200)	December 15, 2017
Late School Registration (\$350)	January 15, 2018
Individual Registration (\$55/ Member)	January 22, 2018
Late Individual Registration (\$100)	February 15, 2018
No Registrations accepted after February 15, 2018	

PLEASE USE THE FOLLOWING LINK TO REGISTER YOUR TEAM FOR
THE 2018 SOUTHEAST ASCE REGIONAL CONFERENCE:

[HTTP://REG.CONFERENCES.DCE.UFL.EDU/ASCE/REGISTER](http://reg.conferences.dce.ufl.edu/asce/register)

SCHOOL REGISTRATION:

You may register your school by following the link above, selecting the “University Registration”, and clicking the “Register” button. You will then be taken to the “Registration Process” page, the “Personal Information” section must include the information for your **Student Chapter Representative** and the “Emergency Contact Information” section must include the information of your **Chapter Faculty Advisor** that will be attending the conference. Once you check the agreement checkbox and hit submit, you will be taken to a secure site to input your credit card information.

Note: The EFT Policy at the bottom of the registration page only applies to Electronic Funds Transfers **NOT** to credit card payments

INDIVIDUAL REGISTRATION:

You may register up to 10 individual team members at a time by selecting “Individual Student Registration” and the number of students. Fill out the appropriate information and click the “Register” button to continue. Follow the steps outlined in the paragraph above to complete the registration and payment process.

HURRICANE RELIEF

The Southeast ASCE Region aid in relief efforts after Hurricane Maria. Universities have the opportunity to sponsor a Puerto Rican student to attend the conference by paying for their \$55 registration fee. If your school would like to sponsor a student please check the “Support Puerto Rico Student Registration” option and select the number of students your chapter would like to support.



HOTEL INFORMATION

FOLLOW THE LINK BELOW LODGING:

[HTTP://SE-ASCE2018.COM/REGISTRATION/LODGING/](http://se-asce2018.com/registration/looding/)

PLEASE USE THE GROUP CODES WE PROVIDE
YOU MUST BOOK THROUGH PHONE OR EMAIL





SPIRIT

COMPETITIONS

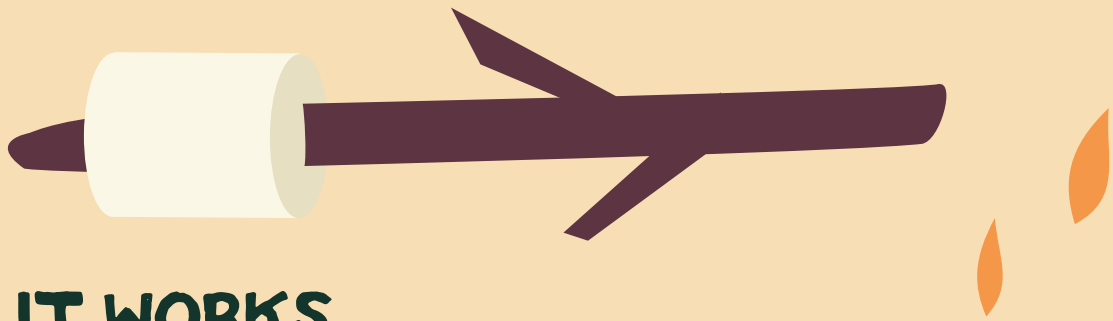
FOLLOW THE LINK TO

LEARN MORE!

[HTTP://SE-ASCE2018.COM/SPIRIT-COMPETITIONS/](http://se-asce2018.com/spirit-competitions/)

SPIRIT COMPETITIONS

LETS MAKE S'MORE MEMORIES THIS CONFERENCE.



HOW IT WORKS

TEAMS EARN POINTS FROM 8 SPIRIT COMPETITIONS. ALL SPIRIT COMPETITIONS ADD UP TO DETERMINE WHICH UNIVERSITY WINS THE SOUTHEAST SPIRIT STICK.

SPIRIT POINTS ARE A PART OF THE OVERALL SCORING



TSHIRT
SCAVENGER HUNT
TEAM CHEER
TEAM FLAG
TUG O' WAR
FACULTY CANOE RACES
SOCIAL ATTENDANCE
STEEL BRIDGE OUTREACH



COMPETITION UPDATES

THE RUBRICS FOR ALL THE REGIONAL COMPETITIONS HAVE BEEN UPLOADED TO THE WEBSITE. CLICK EACH BADGE TO FIND THE

RULES, RUBRICS, AND RFI'S

FOR THAT SPECIFIC COMPETITION!

[HTTP://SE-ASCE2018.COM/EVENTS-AND-COMPETITIONS/](http://se-asce2018.com/events-and-competitions/)

****PLEASE NOTE THE CYLINDER SIZE CHANGE FOR THE REINFORCEMENT RODEO COMPETITION****

VOLUNTEERS



FEEL FREE TO SPREAD THE WORD! IF YOU KNOW ANYONE INTERESTED
IN BEING A JUDGE FOR THE REGIONAL COMPETITION
SEND THEM THE FOLLOWING LINK!

[HTTP://SE-ASCE2018.COM/CONFERENCE-SUPPORT/VOLUNTEER/](http://se-asce2018.com/conference-support/volunteer/)





IMPORTANT DEADLINES
[HTTP://SE-ASCE2018.COM/CALENDAR/](http://se-asce2018.com/calendar/)

TRAFFIC TRAILBALZERS SOFTWARE FORM
DECEMBER 1, 2017

SCHOOL REGISTRATION DUE
DECEMBER 15, 2017

MAILER 2 RECEIPT DUE
DECEMBER 15, 2017

NATIONAL GEOWALL PAPER DUE
JANUARY 5, 2018

MAILER 3 RELEASED
JANUARY 18, 2018

INDIVIDUAL REGISTRATION DUE
JANUARY 15, 2018

STUDENT Q&A WEBINAR
JANUARY 19, 2018